

CANADA FOUNDATION FOR INNOVATION

# Innovation Fund Update 2026 CAP Congress

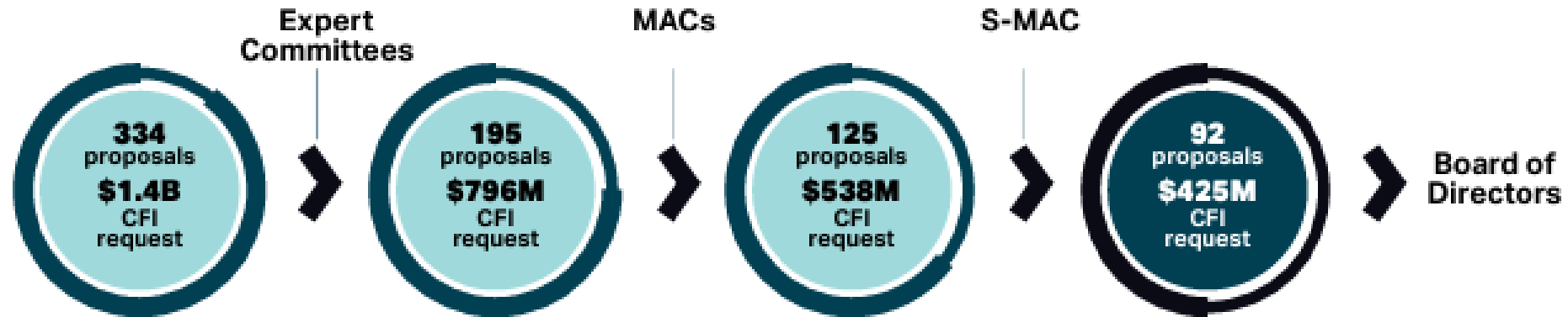
**INNOVATION**

Canada Foundation  
for Innovation

Fondation canadienne  
pour l'innovation

---

# Results of the 2025 competition

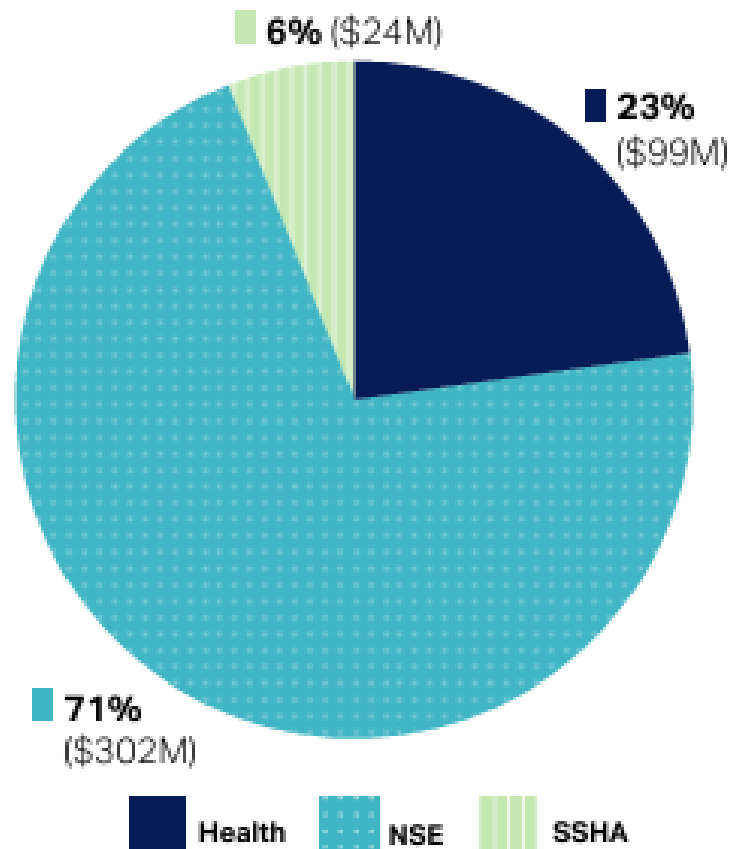


Source: [IF 2025 By the numbers](#)

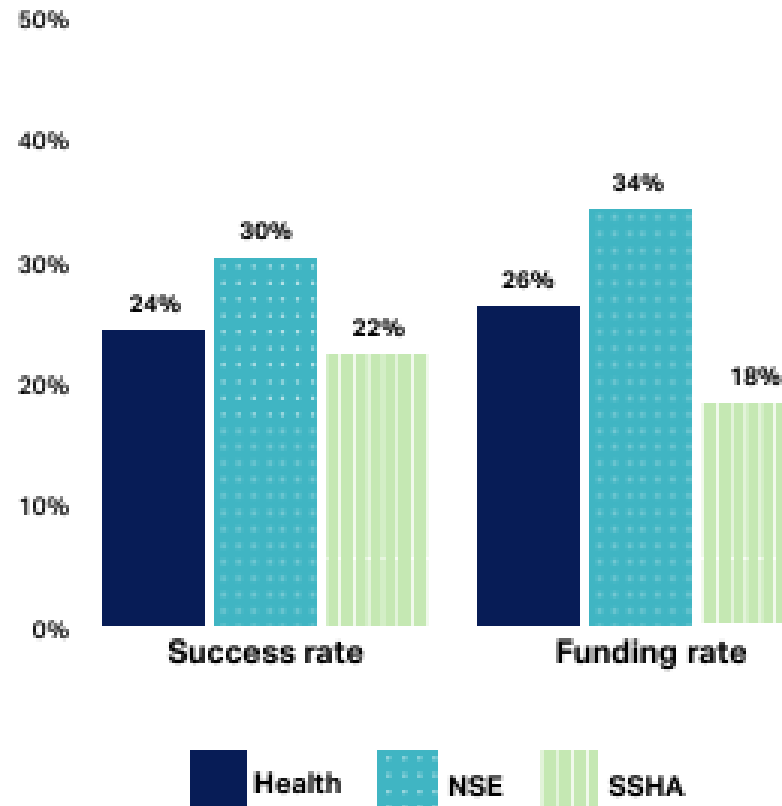


# Results of the 2025 competition

**Figure 12:** Percentage of total amount awarded by field of research (FOR)



**Figure 13:** Success and funding rates by field of research (FOR)



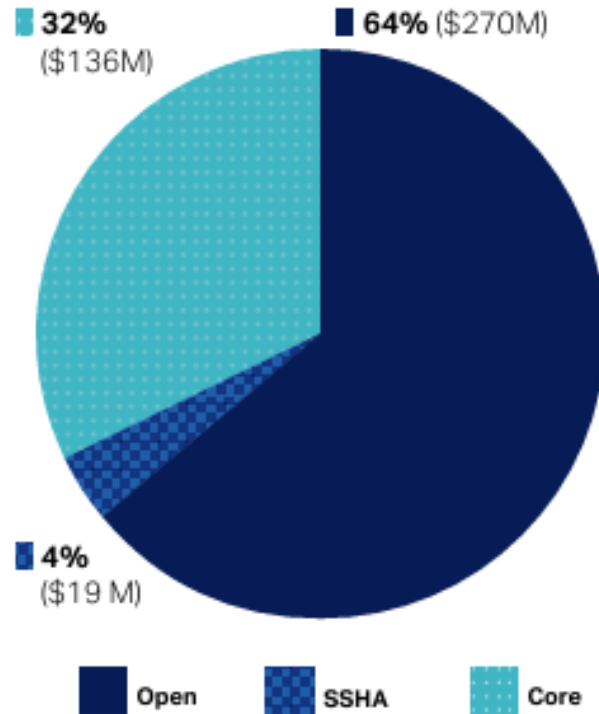
Source: [IF 2025 By the numbers](#)



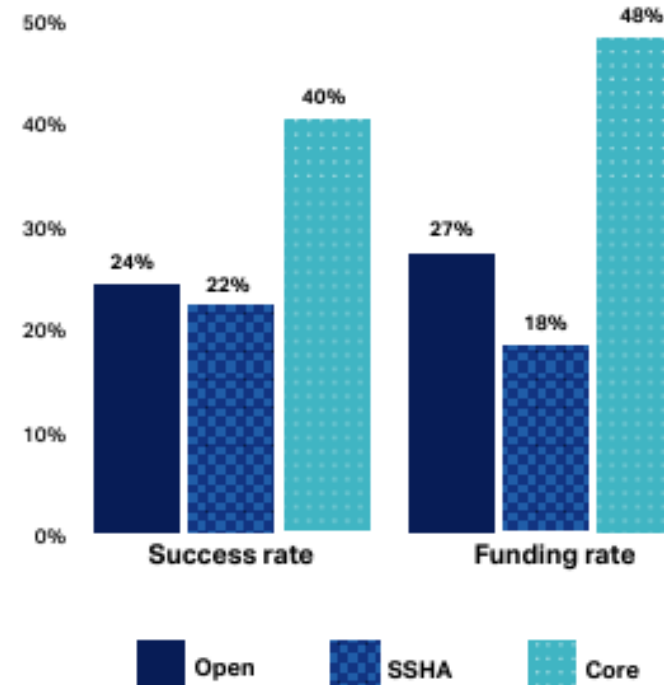
# Results of the 2025 competition

## Results by stream

**Figure 3:** Percentage of total amount awarded by stream



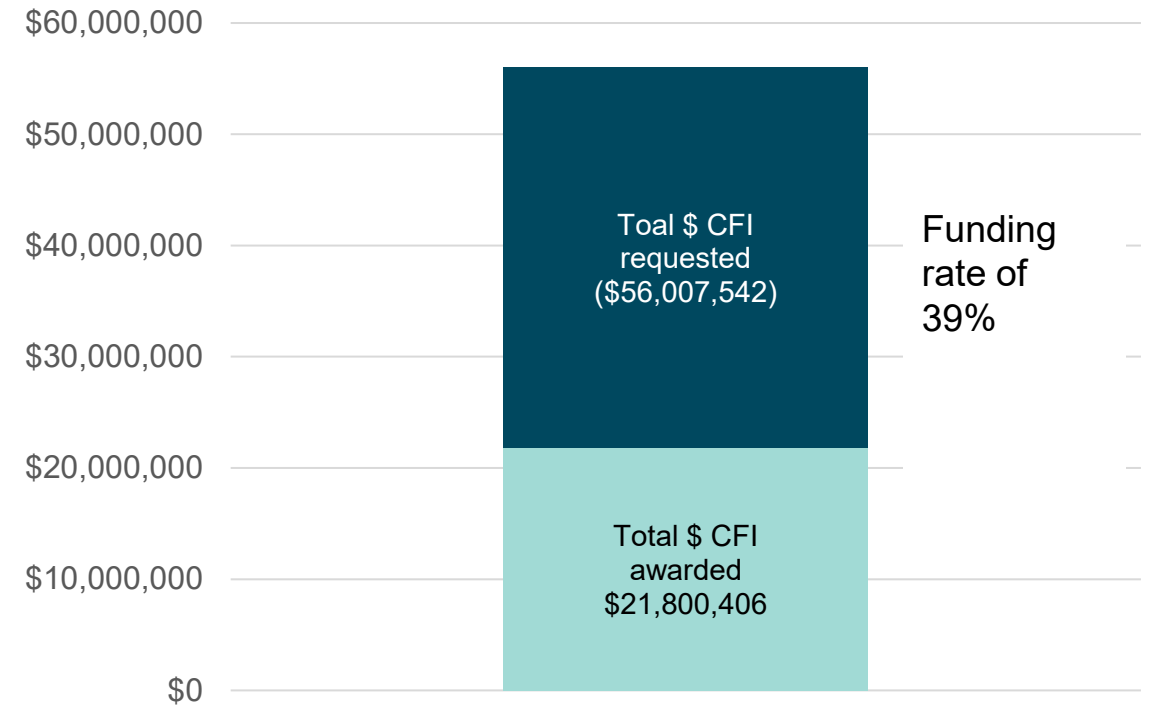
**Figure 4:** Success and funding rates by stream



Source: [IF 2025 By the numbers](#)



# Results of the 2025 competition Projects in subatomic physics



---

# 2027 Innovation Fund

## The basics

**\$ 325 M**

Competition  
budget

**\$ 97.5 M**

Infrastructure  
Operating Fund

**Up to  
40%**

Eligible  
infrastructure costs

Research infrastructure projects should:

- Address Canada's research needs that are relevant in the current global context
- Demonstrate a high level of readiness and the ability to achieve significant impact within a reasonable timeframe
- Build on existing strengths and partnerships where Canada is or can become a global leader.

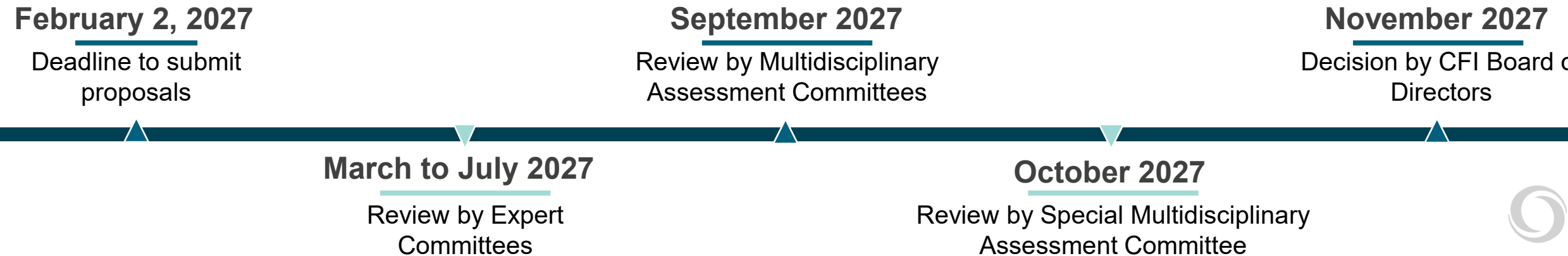


# 2027 Innovation Fund competition timeline

## Important dates in 2026



## Important dates in 2027



---

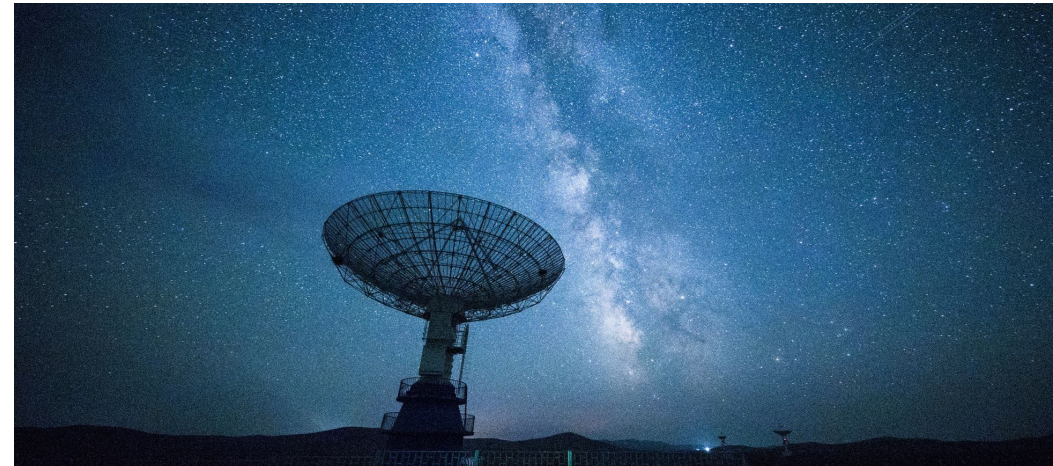
# 2027 Innovation Fund

## Streams

1. **Open:** all disciplines, same as usual
2. **Social sciences, humanities and arts (SSHA):** primary field of research must be in SSHA
3. **Core facilities:** All infrastructure must be located in a core facility and some personnel are eligible.

## Envelopes

- Every institution is allowed to submit one proposal outside their envelope allocation if the primary field of research is SSHA.
- If your institution submits or collaborates on just two proposals (one in SSHA and one in any stream), neither of those projects will be restricted by the institutional envelope.



---

# What is a core facility?

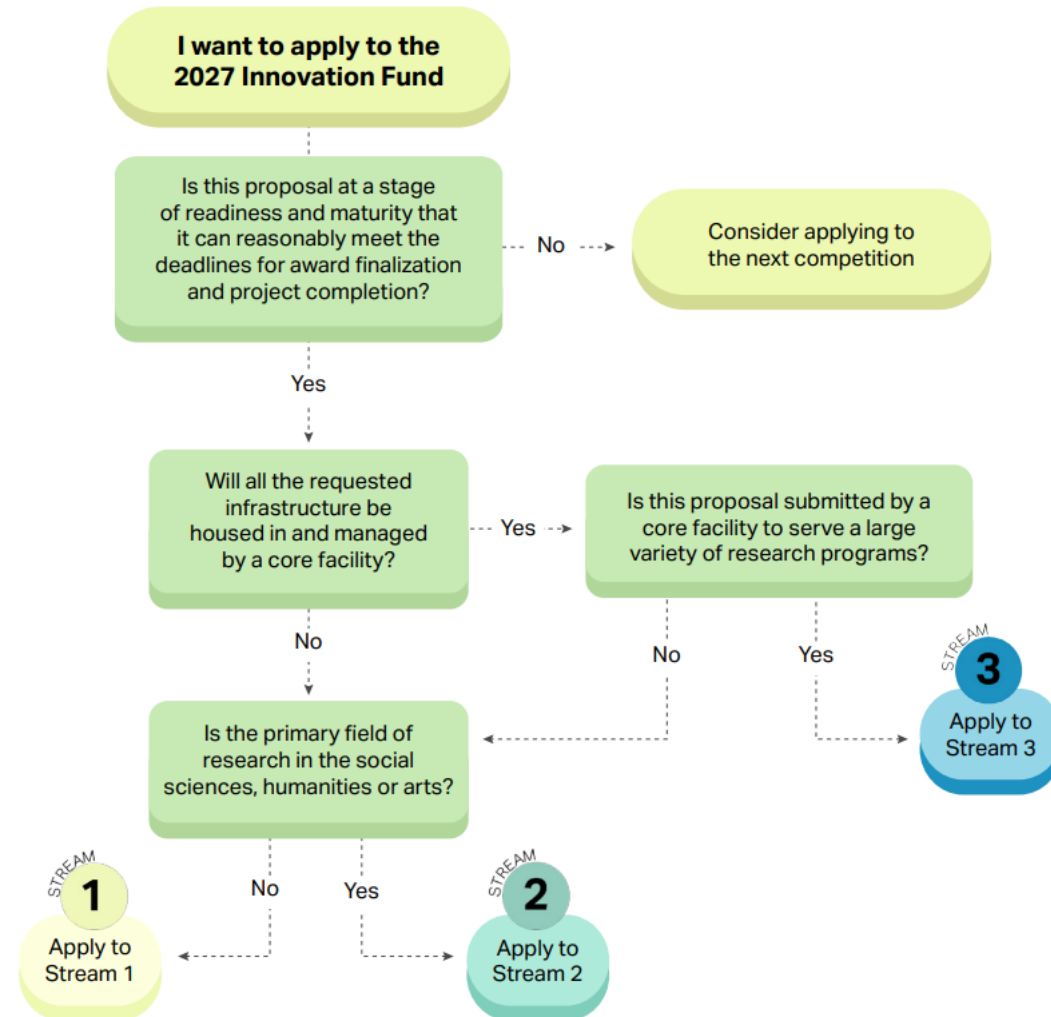
A core facility provides access to state-of-the art research services, analyses, instruments, technology, expertise, training and education which are generally too expensive, complex or specialized for researchers to cost-effectively provide and sustain themselves.

A core facility:

- Is broadly available to many researchers to conduct their research activities, irrespective of their administrative affiliation and with no requirement for collaboration or co-authorship
- Has dedicated equipment and serves a large variety of research programs
- Is formally recognized as a core facility and supported by the research institution where it is located
- Has a clearly defined governance and management structure
- Has a sound management plan reflective of its mandate, breadth and complexity
- Has dedicated management involving individuals with the technical and subject matter expertise necessary to oversee all aspects of the facility.



# To which stream should I apply?



---

# 2027 Innovation Fund

The CFI reserves the right to withdraw its support for projects not finalized within nine months of funding decisions, or for which the final financial report is not submitted within a reasonable time frame.

CFI contribution to a project	Deadline to submit final financial report
≤ \$1 million	November 2031
> \$1 million and ≤ \$4 million	November 2032
> \$4 million	November 2034





---

## Defence and dual-use technologies

- [Canada's Defence Industrial Strategy](#)
- Leveraging partnerships with federal initiatives (e.g., [BOREALIS](#), [DISH](#), [DIANA](#)) in the pursuit of sovereign capability development
- Collaboration with the Department of National Defence:
  - Sharing of NOIs, proposals and expert committee reports
  - Expert committee meetings (observers)
  - Review process and assessment criteria remain the same

# Use of generative AI

- Institutions are ultimately accountable for the complete contents of their proposal.
- Privacy, confidentiality, data security and the protection of intellectual property must be prioritized in the development and review of proposals.
- Review and follow the [Guidance on the use of artificial intelligence in the development and review of research grant proposals.](#)



# Objectives & assessment criteria

## Objective 1

**Strengthen researchers' ability to excel and compete internationally**

- Research
- Team

## Objective 2

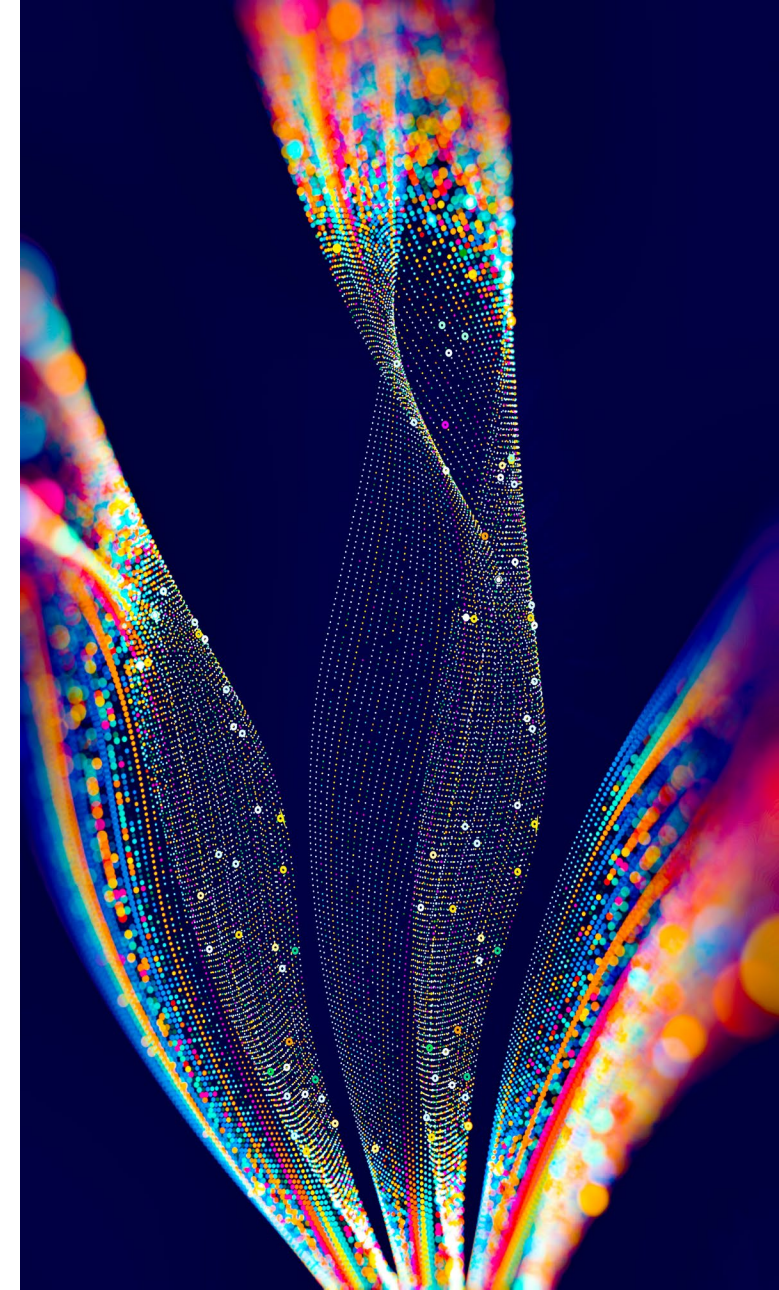
**Build sustainable research capacity**

- Infrastructure
- Sustainability

## Objective 3

**Generate relevant and impactful benefits for Canadians**

- Benefits



---

# Important considerations

## Research

- Equity, diversity and inclusion in research design

## Team

- Diverse research outputs (DORA)
- Inclusive work environment

## Sustainability

- Responsible and ethical data management

## Benefits

- Diversity of benefits
- Turning outputs into outcomes
- HQP



# Tools & resources

## CAMS

- Liaison contact information list
- Automatic CAMS notification for collaborating institutions
- Report repository:
  - Envelope management
  - Team member tracking

## Other resources

- [Innovation.ca](#)
  - [2025 IF analysis of strengths and weaknesses](#)
  - [Policy and program guide](#)
  - [Using CAMS](#)
- [DORA's website](#)
- [Incorporating Indigenous Knowledge](#)
- [CIHR EDI Resources](#)

# Expert Committees

## Research or technology development Strengths (4+)

### Strengths

**79%**

- Innovative research

**75%**

- Feasible/good approach

**59%**

- EDI in research design

**34%**

- Challenges and how to overcome them well described

**5.7%**

- Highly innovative research

**4.4%**

- Exceptional breakthrough potential

**3.5%**

- Global leadership

**2.2%**

- Highly feasible and innovative approach

**1.3%**

- Exceptional EDI in research design

**0.9%**

- Co-development with local communities and Indigenous Peoples

**0.4%**

- Responds to urgent needs

**0.4%**

- Deep understanding of EDI

### Weaknesses

**48%**

- Lack of details on methodology

**36%**

- Lack of details on activities

**35%**

- Challenges and how to overcome them poorly/not described

**29%**

- Feasibility concerns on some aspects



# Expert Committees

## Team

### Strengths

91%

- Relevant experience and expertise

67%

- Good EDI evidence-based actions — participation

56%

- Career-stage balance

55%

- Good EDI evidence-based actions — working environment

49%

- Research track record

27%

- Understanding of EDI-related issues

### Strengths (4+)

7.9%

- Exceptional expertise and experience

4.8%

- Exceptional research track record

3.1%

- Exceptional EDI evidence-based actions — participation and working environment

1.7%

- Global leaders

1.7%

- Deep understanding of EDI

0.9%

- Exceptional collaboration track record

0.9%

- Outstanding team leaders

0.4%

- Exceptional IP/spin-off/industry experience

### Weaknesses

34%

- Missing specific expertise/no critical mass of specific expertise

21%

- Missing details/unclear roles

18%

- Limited information on EDI

18%

- Weak EDI evidence-based actions — participation

15%

- Weak EDI evidence-based actions — working environment



# Expert Committees

## Infrastructure Strengths

91%

- Necessary and appropriate infrastructure

91%

- Complements existing infrastructure

9%

- Innovative infrastructure

## Strengths (4+)

4.4%

- Highly innovative infrastructure

1.7%

- Critical infrastructure

1.3%

- Highly versatile infrastructure

## Weaknesses

45%

- Some equipment not well justified/not connected to research activities

26%

- Weak complementarity of some equipment with existing infrastructure

12%

- Limited information on the availability of similar/existing infrastructure



# Expert Committees

## Sustainability Strengths

84%

- Good O&M plan

83%

- Good plan for equitable and inclusive access

82%

- High demand/large user base/good access plan

79%

- Good data management plan

64%

- O&M costs well justified

## Strengths (4+)

1.3%

- Proven governance and oversight plan

1.3%

- Exceptional plan for equitable and inclusive access

1.3%

- Exceptional data management plan

0.4%

- Proven O&M plan

## Weaknesses

37%

- Limited information on optimal use

26%

- Limited information on data management

25%

- Limited information on equitable and inclusive access

21%

- Limited information on O&M budget

19%

- Limited information on O&M plan



# Expert Committees

## Benefits

### Strengths

91%

- Potential for impact

81%

- Credible pathways for knowledge mobilization and technology transfer

76%

- Good integration of EDI in training and mentorship

64%

- Meaningful inclusion of impacted people or communities

44%

- Strong HQP training plan

### Strengths (4+)

5.7%

- Exceptional potential for impact (including commercialization and job creation)

2.6%

- Co-development with impacted people or communities

1.8%

- Exceptional HQP training track record and/or significant number of HQP

1.8%

- Exceptional HQP training plan and/or unique training opportunities

1.7%

- Proven pathways for knowledge mobilization and technology transfer

1.3%

- Exceptional integration of EDI in training and mentorship

1.3%

- Critical importance to Canada

### Weaknesses

21%

- Limited information on specific benefits

21%

- Limited information on knowledge mobilization and technology transfer pathways

19%

- Weak integration of EDI in training and mentorship

18%

- Limited information on the integration of EDI in training and mentorship

15%

- Limited information on impacted people or communities



# MACs

## Objective 1

STREAM  
1

### Strengths

- 50%
  - Innovative research
- 49%
  - Relevant expertise and experience
- 38%
  - Good EDI evidence-based actions — participation and working environment
- 30%
  - Research track record
- 28%
  - Internationally competitive
- 26%
  - EDI in research design
- 25%
  - Career-stage balance
- 25%
  - Feasible/good approach

### Strengths (4+)

- 10%
  - Exceptional expertise and experience (including IP/spin-off/industry) and/or exceptional research track record
- 8.5%
  - Highly innovative research
- 6.2%
  - Exceptional breakthrough potential
- 2.3%
  - Co-development with local communities and Indigenous Peoples
- 2.3%
  - Global leadership
- 2.3%
  - Highly feasible/innovative approach and/or challenges and how to overcome them very well described
- 1.5%
  - Exceptional collaboration track record
- 0.8%
  - Exceptional EDI evidence-based actions — participation and working environment

### Weaknesses

- 18%
  - Lack of details on methodology
- 18%
  - Missing specific expertise/no critical mass of specific expertise
- 13%
  - Lack of details on activities
- 12%
  - Feasibility concerns on some aspects
- 9%
  - Challenges and how to overcome them poorly/not described
- 7%
  - Projects not integrated/lack of focus
- 5%
  - Limited information on EDI in research design
- 5%
  - Lack of details on comparable programs



# MACs

## Objective 2

### Strengths

52%

- Necessary and appropriate infrastructure

46%

- Good O&M plan

43%

- Good governance/oversight plan

40%

- Good plan for equitable and inclusive access

39%

- Complements existing infrastructure

29%

- Good data management plan

29%

- High demand/large user base/good access plan

### Strengths (4+)

4.6%

- Highly innovative infrastructure

2.3%

- Perfect complement to existing infrastructure

0.8%

- Proven O&M plan

0.8%

- Exceptional team track record in management

0.8%

- Critical infrastructure

0.8%

- Integrated with sustainable facility

0.8%

- Robust business model

### Weaknesses

13%

- Some equipment not well justified/not connected to research activities

11%

- Limited information on O&M budget

9%

- Limited information on data management

8%

- Limited information on optimal use

7%

- Limited information on O&M plan

6%

- Weak data management plan

6%

- Weak governance/oversight plan

6%

- Weak O&M plan

STREAM  
1



# MACs

## Objective 3

### Strengths

55%

- Potential for impact

37%

- Credible pathways for knowledge mobilization and technology transfer

30%

- Good integration of EDI in training and mentorship

26%

- Meaningful inclusion of impacted people or communities

24%

- Strong HQP training plan

### Strengths (4+)

10%

- Exceptional potential for impact (including commercialization and job creation)

3.1%

- Exceptional HQP training plan and/or unique training opportunities

2.3%

- Proven pathways for knowledge mobilization and technology transfer

2.3%

- Exceptional HQP training track record and/or significant number of HQP

1.5%

- Co-development with impacted people or communities

0.8%

- Exceptional integration of EDI in training and mentorship

0.8%

- Exceptional partnership with end users

### Weaknesses

12%

- Limited information on impacted people or communities

9%

- Weak technology transfer and knowledge mobilization plan

9%

- Limited information on technology transfer and knowledge mobilization pathways

8%

- Limited information on specific benefits

6%

- Weak benefits

STREAM  
1



CANADA FOUNDATION FOR INNOVATION

**Thank you**

Contact us anytime at  
[innovation.fund@innovation.ca](mailto:innovation.fund@innovation.ca)